

Community Health Service Partner Eastern Access Community Health

Eastern Access Community Health (EACH) delivers an integrated range of community based health, disability and mental health support services. EACH works in partnership with the community to enhance the physical, mental and social well being of individuals, families and communities in the Eastern Metro Region of Melbourne.

Primary Health Care Services

Primary Health Care services focus on illness, prevention, health promotion and community based care. Delivered from Maroondah Social and Community Health Centre, 75 Patterson Street, Ringwood East, 9879 3933

Disability Services

Disability Services provides assistance for people with intellectual disabilities or acquired brain injury to access community programs and provide respite and other support for their carers. For further information 9871 1850

Community Mental Health Support Services

A range of support services including home-based outreach, individual and group programs and employment support are available to assist people with psychiatric disability and/or complex needs to live independently in the community

Specialist Regional Counselling Services

Specialist Regional Counselling services provide information, assessment, individual and family counselling, referral and a range of support programs including: Eastern Alcohol & Drug Service, Gambler's Help Eastern, Eastern Victims Assistance & Counselling Program, Financial Counselling and Youth Services.

EACH SITES

City of Maroondah

75 Patterson St, Ringwood East

- Maroondah Social and Community Health Centre
- 15 Greenwood Ave, Ringwood

- Crest

46 Warrandyte Rd, Ringwood

- Disability Services
- Financial Counselling
- EDAS
- Youth Services
- Eastern Victims Assistance & Counselling
- Gamblers Help Eastern

18 Bond St, Ringwood

- Eastern Employment Services
- 9 Greenwood Ave, Ringwood
- Lifeworks

City of Whitehorse

953 Whitehorse Rd, Box Hill

- Eastern Access Employment Services
- Schools Focused Group
- Shire of Yarra Ranges

7-9 John St, Lilydale

- Eastern Access Employment Service, CREST, Reachout, COPEs

1 Joffre St, Healesville

- Golden Wattle

1 Badger Creek Rd, Healesville

- Rivendale

6 Vimy Ridge, Healesville

- Healesville Early Intervention Program

City of Knox

3 The Avenue, Ferntree Gully

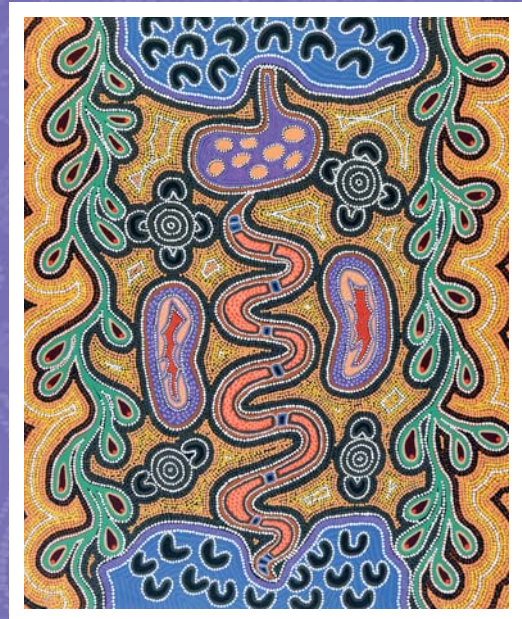
- Haycyon

2 Capital City Boulevard, Wantrina South

- Eastern Access Employment services



Better access to local health service for the Aboriginal Community living in the Eastern Metro Region



Artwork: Mayi Yunggadja Wanggi
Artist: Irene Wangudu O'Loughlin, Narungga

Mullum Mullum Indigenous Gathering Place

3 Croydon Way, Croydon Vic 3136

PH: 9725 2166

What is AHPACC

The Aboriginal Health Promotion and Chronic Care Program (AHPACC) is a new Victorian Government initiative designed to support both Community Health Services (CHS) and Aboriginal Community Controlled Health Organisations (ACCHOs) to work in partnership to increase access to primary health care services by Aboriginal people.

The goal of this program is to improve health outcomes for Aboriginal Victorians including those with chronic disease or at risk of developing chronic disease, through health promotion, prevention, early intervention, and ongoing care. The Mullum Mullum Indigenous Gathering Place (MMIGP) in partnership with Eastern Access Community Health (EACH) will be implementing the AHPACC in Melbourne's eastern metropolitan region.

EMR- AHPACC Vision Statement

The Aboriginal community is entitled to enjoy the same health status and equity of access to health services as all other Victorians. Yet Aboriginal people currently experience significant inequality compared to other Victorians.

Aboriginal health as defined by the Aboriginal community does not just mean the physical wellbeing of the individual but is inclusive of the social, emotional, spiritual and cultural wellbeing of the whole community.

Indigenous Health Facilitator

Do you need a service now? Talk to our Health Facilitator (Nurse) on how to access health services in your area, including:

- Doctors
- Dieticians
- Physiotherapists
- Dentists
- Asthma Educators
- Health Equipment
- Community Health
- Podiatrist and Footcare
- Social Workers
- Diabetes Educators
- Join a self-help group
- and other services

Indigenous Health Promotions Officer

Do you want to have a healthier lifestyle? Our Health Promotions Officer is looking at developing:

- Staying healthy activities
- Quit smoking programs
- Cooking and healthy eating programs
- Get fit and exercise classes
- Activities and special events for Aboriginal young people

EMR Aboriginal Health Promotion & Chronic Care Partnership (AHPACC)

Where to find us

Penny Wagstaff
Indigenous Health Facilitator
Ph: 03 9837 3999 Email: pwagstaff@each.com.au

Bronwyn Fenn
Indigenous Health Promotions Officer
Ph: 03 9837 3999 Email: bfenn@each.com.au

Eastern Access Community Health
75 Patterson Street, Ringwood East VIC 3135
Fax: 03 9879 6356

Aboriginal Community Partner Mullum Mullum Indigenous Gathering Place

The Mullum Mullum Indigenous Gathering Place (MMIGP) is a collaborative partnership between the Indigenous Community of the Eastern Metropolitan Region and Eastern Access Community Health (EACH), supported by the Eastern Metropolitan Region of the Department of Human Services. The Model for MMIGP has been developed along the lines of a neighbourhood house and will be developmental and evolve over time according to identified need. The aims and objectives of the MMIGP Model will support the following enhanced outcomes for the EMR Indigenous community:

- Lengthening life
- Strengthening children, young people and families
- Cultural integrity and safety
- Support to implement innovative community-based approaches and solutions
- Collaborative planning and decision-making based on community-driven priorities
- Stronger partnerships between Indigenous and mainstream services
- Stronger partnerships with government

MMIGP VISION STATEMENT

A community that is committed to retaining, promoting and strengthening Aboriginal and Torres Strait Islander cultural identity within the Eastern Metropolitan Region

MMIGP PURPOSE STATEMENT

- Cultural learning experience for everyone
- Learning new skills
- Somewhere to yarn up
- A sense of belonging and safety
- Bringing families and community together
- Where you can relax and enjoy yourself
- Promote and enhance our Elder's status within the community